



MONTIEN HOTEL

SURAWONG • BANGKOK

OVERVIEW

In the heart of Silom, Montien Hotel Surawong Bangkok is synonymous with the very best hospitality. Our rooms are rich in distinctive contemporary Thai design and fabrics, and a Michelin recommended restaurant promises a gastronomic journey across Thailand and far beyond - making Montien Hotel a favourite for discerning travellers globally.

ADDRESS

54 Surawong Road,
Silom, Bangrak
10500, Bangkok, Thailand
Tel: + 66 2 233 7060 | Email: info@montienbangkok.com
www.montienbangkok.com
Facebook [@montiensurawongbkk](https://www.facebook.com/montiensurawongbkk) | Instagram
[@montiensurawongbkk](https://www.instagram.com/montiensurawongbkk) | LINE ID [@montienbangkok](https://www.line.me/tw/montienbangkok)

VISITOR INFORMATION

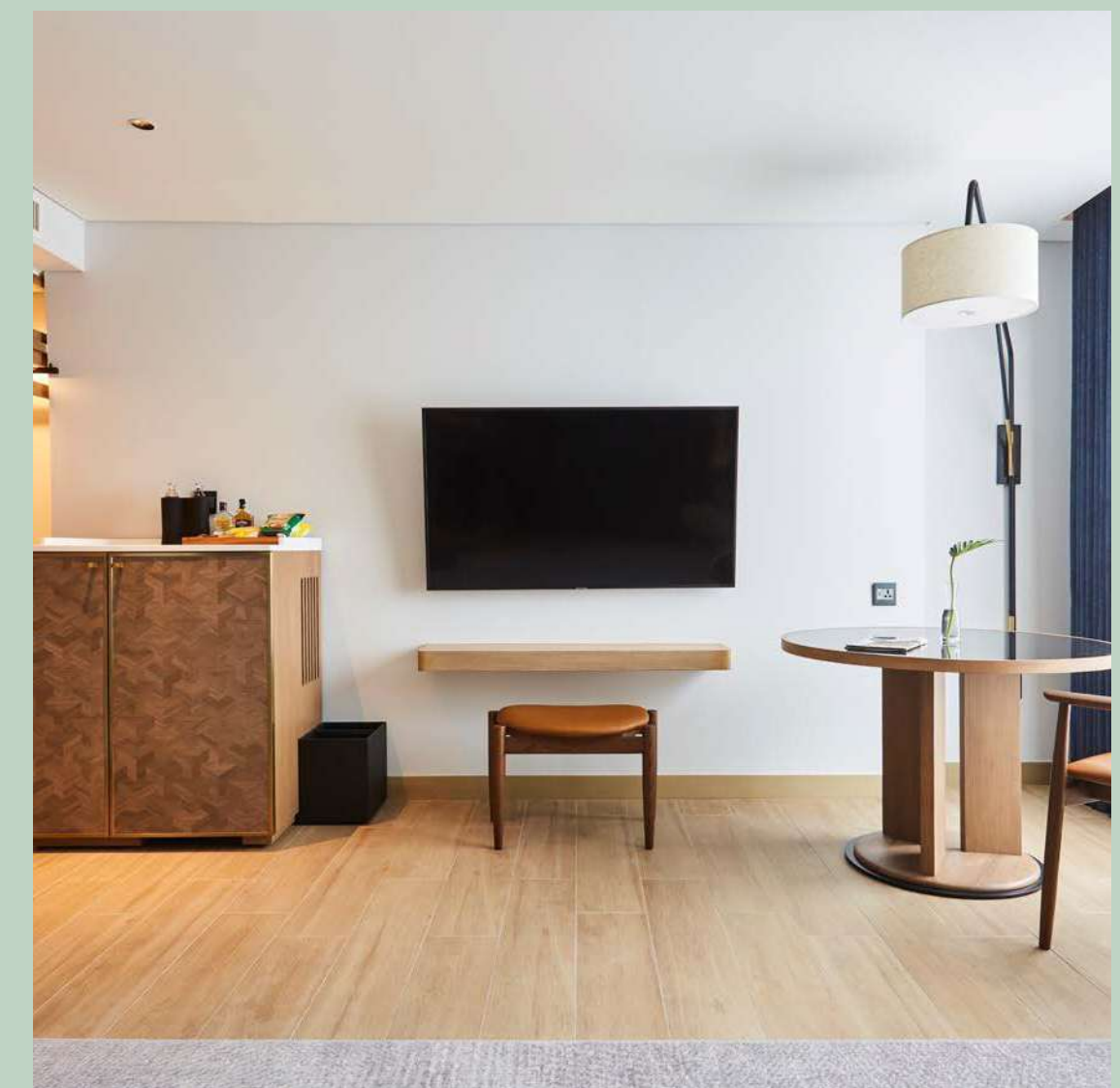
- Don Mueang International Airport 27.4 km
- Suvarnabhumi International Airport 34.7 km
- MRT Blue Line: Samyan Station 400 m
- BTS Silom Line: Saladang Station 450 m
- Secured car parking for hotel guests
- Language: Thai, English, Japanese, Chinese
- Currency: Thai Baht (THB)
- Voltage: 220 V

DESTINATION

- Grand Palace and Temple of the Emerald Buddha
- Neilson Hays Library
- ATT 19, a multidisciplinary retail, art, and exhibition space
- Patpong Night Bazar
- Colour of Charoenkrung
- Sam Yan Mitrtown
- Siam Paragon
- Central World
- Lumpini Park
- Jim Thompson, Thailand's most famous Thai silk brand
- King Power Mahanakorn
- Icon Siam







STYLISH ACCOMMODATION

Montien's 470 rooms combine timeless Thai style with a contemporary attitude. All our rooms are generously spacious and come with the comfort and technology to satisfy today's savvy traveller.

Deluxe Rooms

30 sqm with king or twin bed

Premier Rooms

32 sqm with king or twin bed, soaking bathtub and TOTO washlet

Premier Corner

40 sqm with king or twin bed

Premier Deluxe

42 sqm with king or twin bed

Junior Suite

56 sqm with California king or double-double bed, soaking bathtub, TOTO washlet and vanity desk.

One-bedroom Balcony Suite

60 sqm with king bed and a private balcony

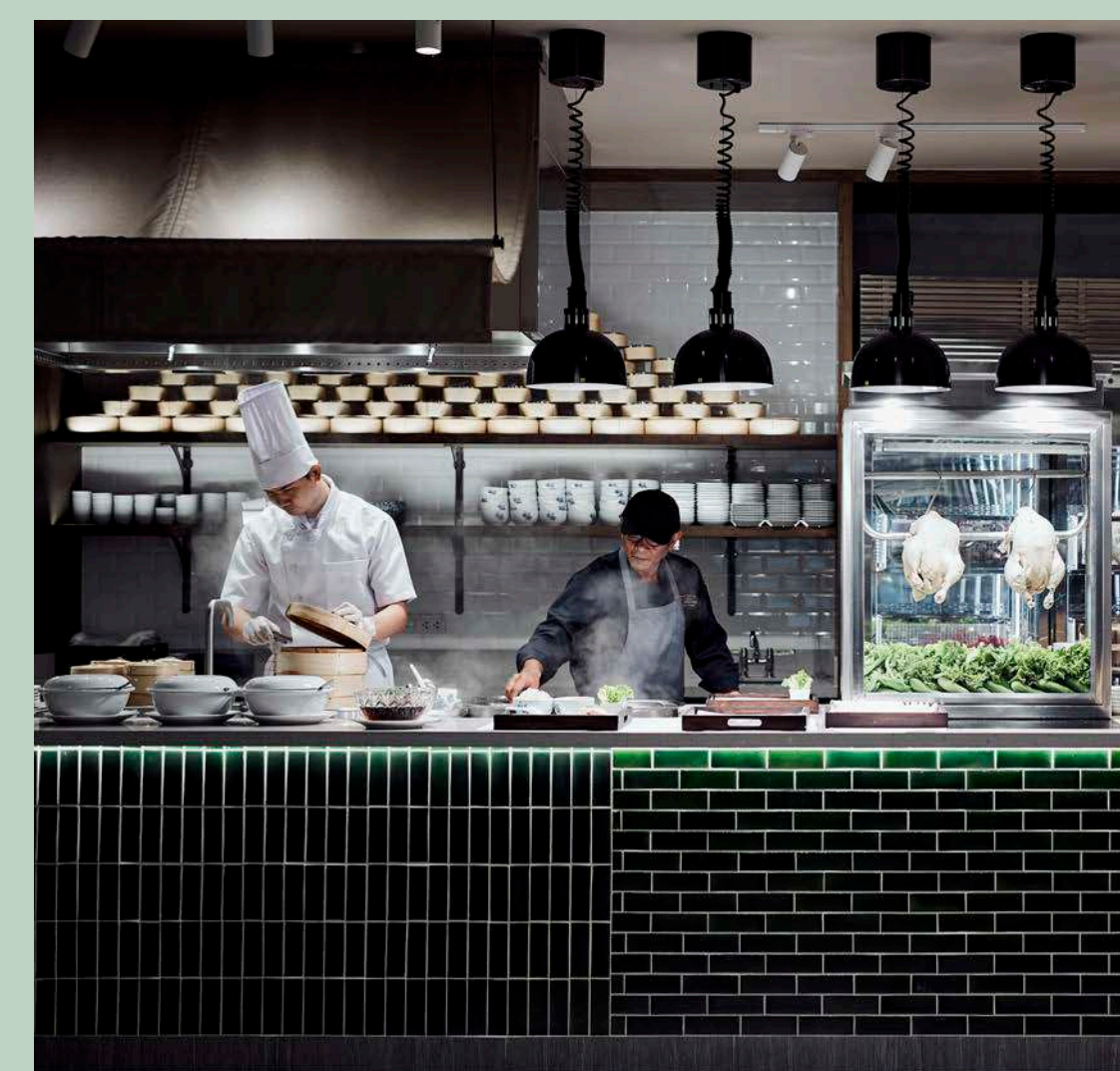
One-bedroom Corner Suite

A corner suite of 70 sqm with king bed, and private balcony

ALL ROOMS WITH

- High-quality Sealy Mattress and luxury bed linens
- Artworks from legendary Thai artist Paiboon Suwannakudt
- Thai Khomapastr fabric accent the room
- Working and reading desk
- Complimentary high-speed wireless Internet
- Home away from home crafted Minibar
- Smart UHD 4K 55" Samsung TV and Entertainment on demand via streaming
- Bluetooth speakers
- Toto sanitary ware
- Ample USB and charging outlets
- Organic Charcoalogy™ bathroom amenities
- Hairdryer
- In-room safe
- Iron and ironing board upon request





RUENTON

Recognized by Michelin as one of the best of its kind, the award-winning Ruenton restaurant takes authentic Thai/Chinese street food to delicious new heights. It's an all-day-dining destination serving breakfast, lunch, dinner and everything in between.



The food selection is a perfect blend of authentic tastes and contemporary presentation. Local favourites include Hainanese Chicken Rice, a superb selection from the old Jade Garden Chinese restaurant, Dim Sum and Thai specialities by the Montien's master chefs.

The restaurant sits up to 250 diners in a choice of settings that are ideal for lounge dining, intimate dinners, social gatherings and corporate get-togethers. For special events there are two private dining rooms, three function rooms and a lounge area.

Hours of Operation: Daily, from 06:30 am to 10:30 pm
Capacity: 250 seats



PHAR-RAM IV BISTRO

CAFÉ and DELI

The restaurant's 'Grab and Go' or 'Stay and Enjoy' daytime menu presents a tantalizing array of authentic French pastries, delicious sandwiches, salad and desserts. A comprehensive range of beverages are available with highlights including PhAR-RAM IV's signature Parisian-style hot chocolate and Earl Grey Apple Cooler.

BISTRO and WINE BAR

As the sun sets, the mood softens to present you with a cosy chill-out bar for after-work Happy Hours drinks or a fun evening of good food, great company and lots of laughter.

The creative dinner menu is European with French fare and is perfectly complemented with a hand-picked wine selection together with an impressive choice of aperitifs cocktails and digestifs.

Hours of Operation - Open daily | Capacity: 34 seats
CAFÉ / DELI: 7am - 5pm daily
BISTRO / WINE BAR: 5pm - 11pm daily







RAJMONTIEN GRAND BALLROOM

A phenomenal audio and visual experiences are the key offering at Rajmontien Grand Ballroom. The venue is well equipped beyond standard of traditional ballroom with P2.5 LED indoor 6-meter-wide and 3.6-meter-high screen at the main stage backdrop, 4 pillars wrapped by video wall, 3-RGB-ship LCD projectors (beyond HD), livable broadcast, audio features up to mini concert and the infinite changeable color of LED ceiling light. The ballroom is planned to facilitate any hosts, organizers, and production teams especially for event, concert, weddings, meetings and conferences. With professional acoustic calculation, moveable partitions and doors are designed to give flexibility with soundproofing quality if the ballroom is divided. Dimming down the light, any memorable events can be transformed as a state-of-art performance; namely, C-level conference, society's elite gatherings, wedding reception, annual board meeting, shareholders meetings, corporate events, and gala sit-down dinners.

Grand Ballroom space: 800 sq.m
Capacity: up to 800 guests

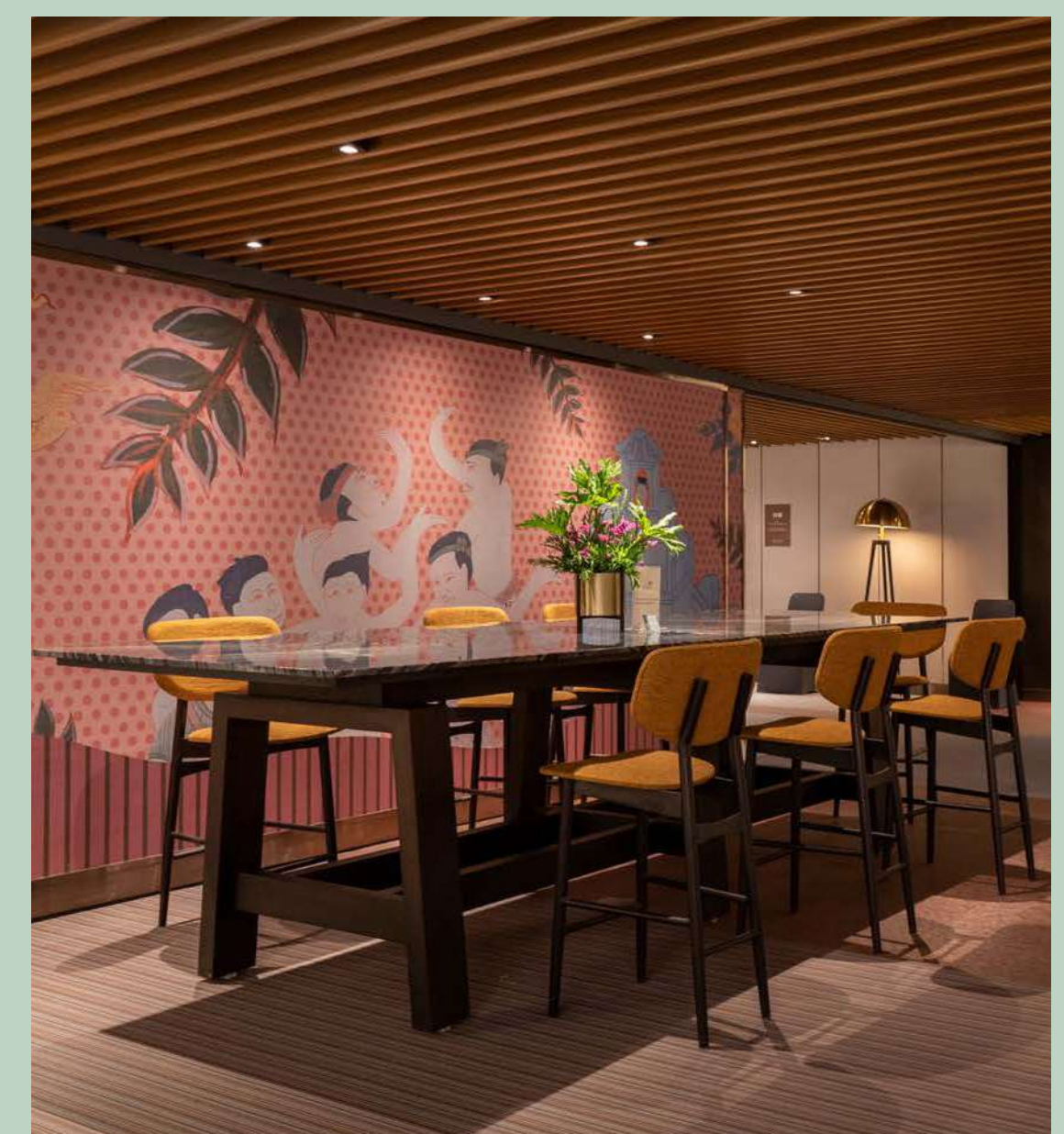


MONTIENTHIP

Dominated by stunning gold leaf ceiling, an original Thai Crimson room featuring with royal arts and crafts is one of a kind, especially priceless murals by the greatest national artist -Paiboon Suwannakudt. An impressive historical Thai saloon glories in living monument of Thai decorative pillars with handcrafted glass and mirror inlay technique. Carved plasterwork and murals are fully restored. Such remarkable space is ideal to host any event with great pride: signing ceremony, cocktail parties, exclusive interviews, engagement ceremonies, and gala dinners.

Totaling space: 216 sq.m

Capacity: up to 150 guests with stage for engagement reception



AN AN (aka Pimanthip)

AN AN has a long been synonymous with renown ballroom dancing and entertainment since disco era. The interior reminisces about the Montien Hotel's past in the golden 1980's, it is upgraded to today's technology in audio, visual and lighting. This potent and unique character brings about a highly flexible venue layout: with carpet or without carpet. This makes a stunning backdrop for social events of all kinds.

Totaling space: 285 sq.m.
Capacity: up to 220 guests with stage





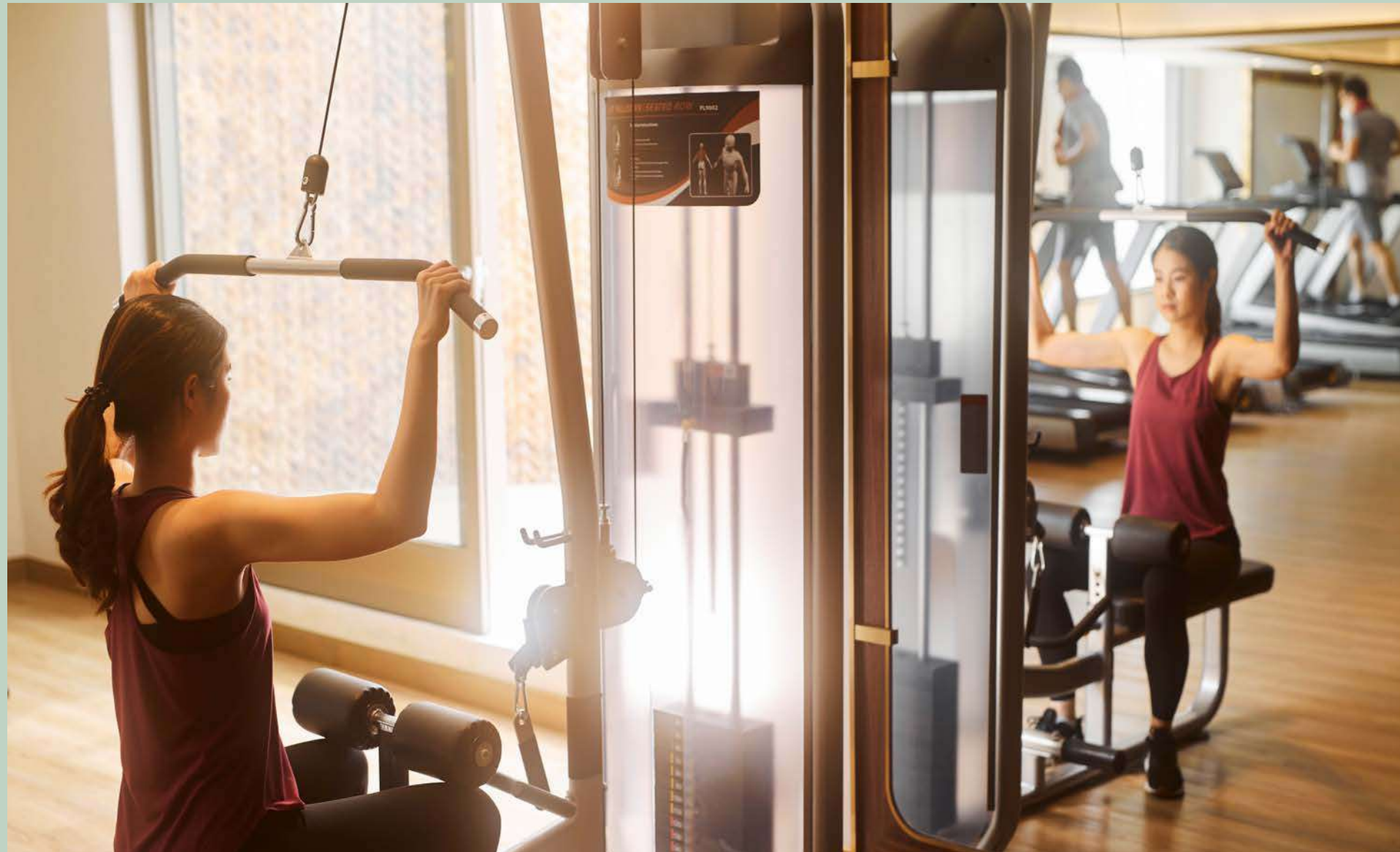
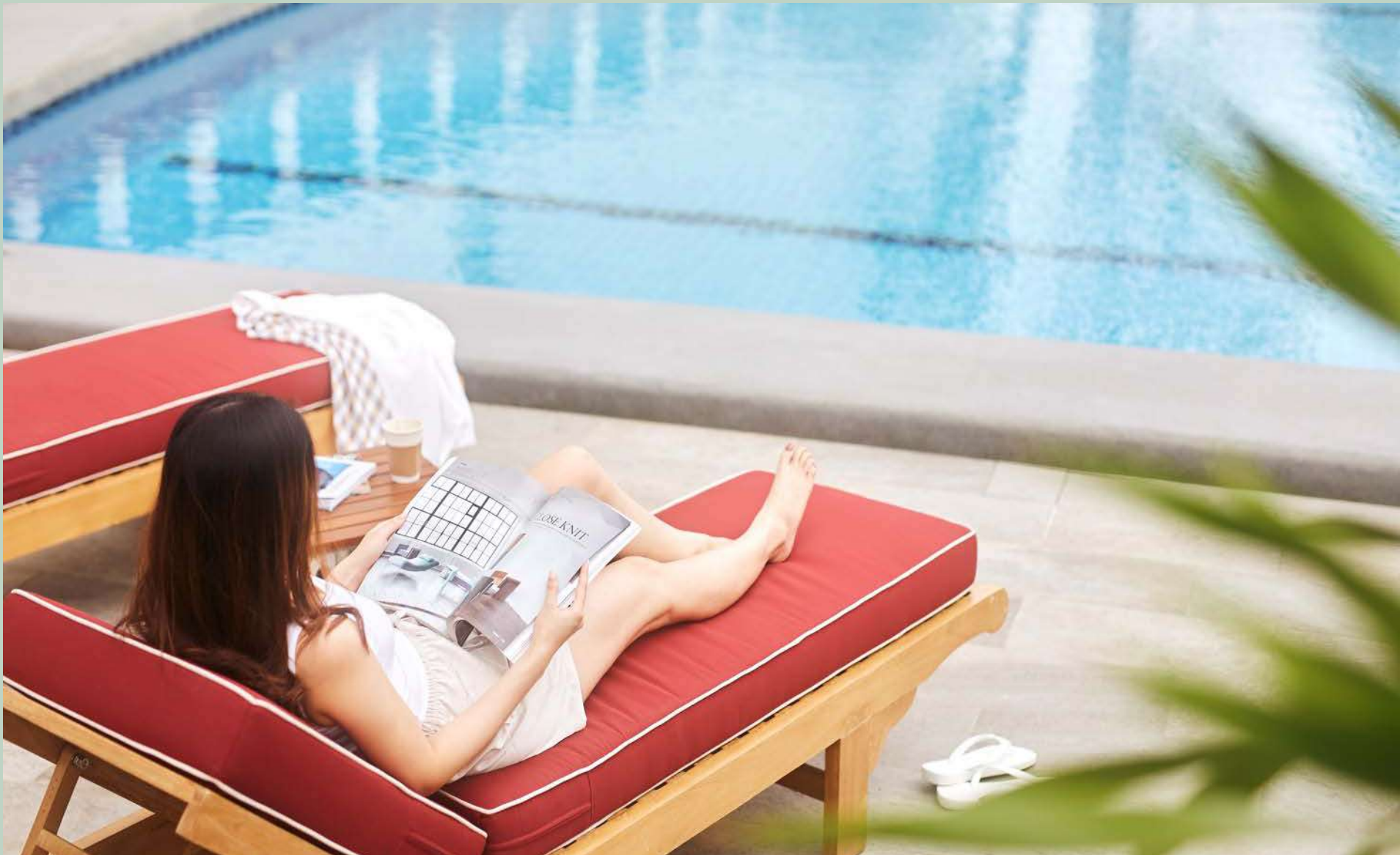
GYM & POOL

The 15-meter in length swimming pool is exclusively for in-house guests solely with 3-meter privacy restored antique wall. The corner of a rooftop pool is offering loungers and umbrellas relaxing on the sundeck with view of the Bangkok's city skyline.

The pool located on the 3rd floor is open daily from 7 am to 7 pm.

Fully equipped gym offers cardio-vascular machines: treadmills, elliptical cross-trainers, and spinning bikes. Strength training machines, free weight, stretching accessories and yoga mats are also available.

The gym located on the 3rd floor is open daily from 6 am to 9 pm.





MONTIEN HOTEL

SURAWONG • BANGKOK